

# SuperClear™

## Water Treatment System



**BLENDCO**  
SYSTEMS  
A Division of DuBois Chemicals

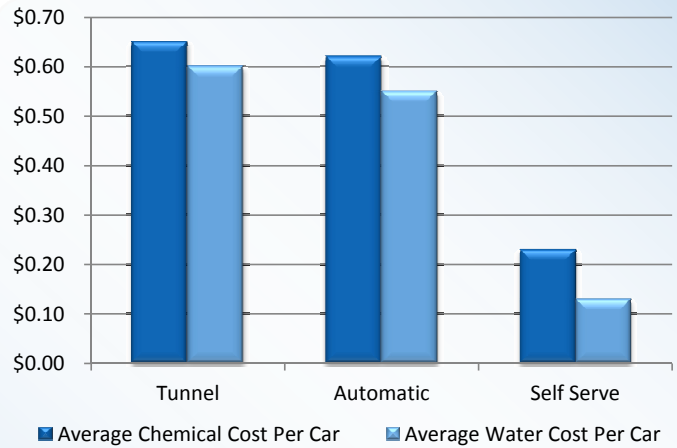
## Did you know...

...that water at a carwash can cost as much or more per car than chemicals?

Typical reclaim systems can be an effective way to recover some of the water used, but they can only go so far. They are expensive and complicated, and the water can only be used with rinse stages because of poor water quality. Surveys show that 60% of typical reclaim systems are eventually turned off completely because of ongoing failures and shortfalls.

Blendco has developed a better way to treat and reuse water without the complications of filters and ozone generators- the patent-pending SuperClear System!

SuperClear is a filterless approach to cleaning water. SuperClear harnesses water's natural ability to drop out dirt and contaminants and exponentially accelerates the process through the use of chemistry.



The above numbers are based on the average cost of water and sewer at \$.01/gal.

Tunnel: Based on the average full serve exterior at 60 gal/car.

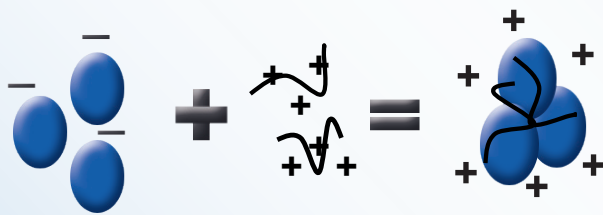
Automatic: Based on the average touchless automatic at 55 gal/car.

Self Serve: Based on the average of 13 gal/car.

**Truck washes** use 100-200 gallons of fresh water per truck. At an average of \$.01/gal for water and sewer, that is \$1.00-\$2.00 per vehicle. SuperClear can save half or more of that!

## How Does SuperClear™ Work?

P  
A  
R  
T  
I



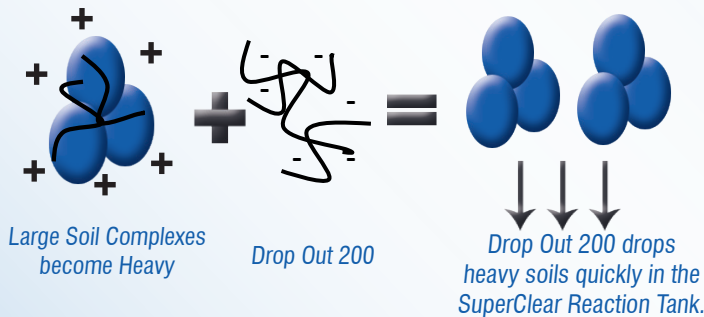
Tiny Soil Particles

Combine 100

Large Soil Complexes

SuperClear uses a proprietary coagulant, Combine 100, to attract microscopic dirt particles and combine them into larger soil complexes.

P  
A  
R  
T  
II



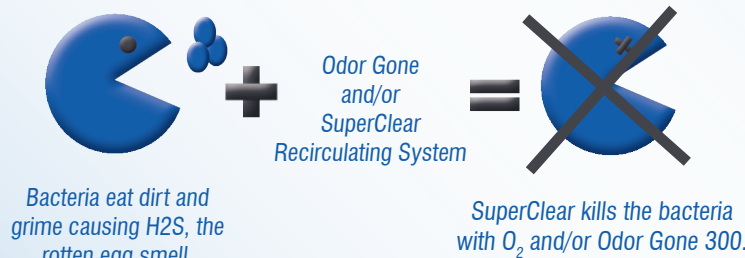
Large Soil Complexes become Heavy

Drop Out 200

Drop Out 200 drops heavy soils quickly in the SuperClear Reaction Tank.

SuperClear takes these heavy dirt complexes and accelerates their fallout using Drop Out 200 flocculent. The SuperClear System automatically separates the clean and the dirty water.

P  
A  
R  
T  
III



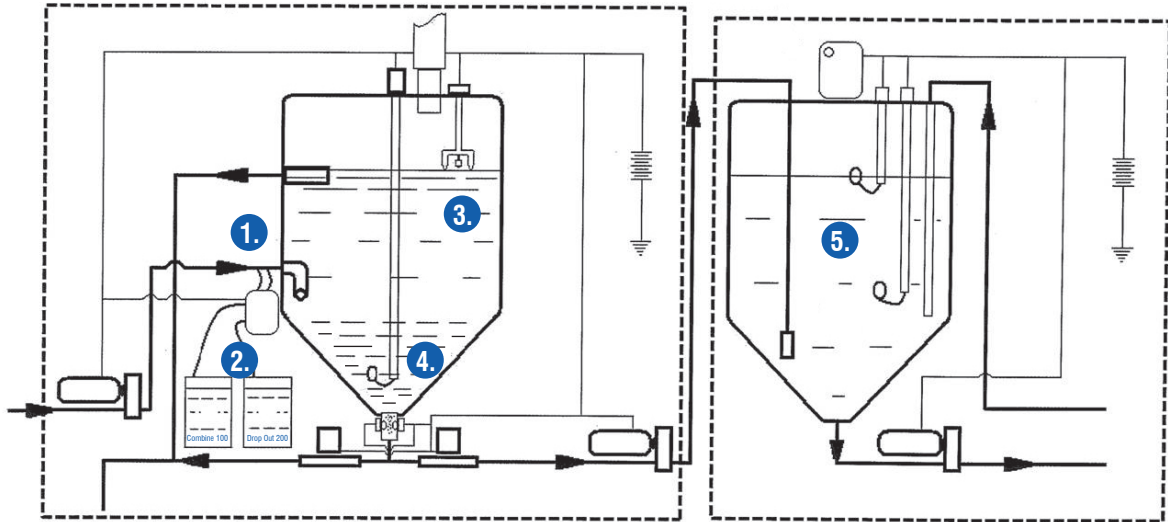
Bacteria eat dirt and grime causing H<sub>2</sub>S, the rotten egg smell.

Odor Gone and/or SuperClear Recirculating System

SuperClear kills the bacteria with O<sub>2</sub> and/or Odor Gone 300.

SuperClear Odor Gone 300 and/or the SuperClear Recirculating System disallow anaerobic bacteria to thrive on soils, thereby eliminating odor in the recycled water.

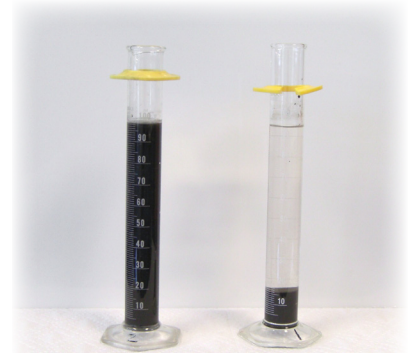
# The SuperClear™ System



1. Dirty water enters the Reaction Tank.
  2. SuperClear Combine 100 and Drop Out 200 are pumped into the tank and mixed with the dirty water.
  3. The cycle time allows the Combine 100 and Drop Out 200 to react with the dirty water, and the dirt eventually settles to the bottom of the tank.
  4. Once the dirt settles at the bottom, the system purges this collected dirt out of the system.
  5. The clean water is pumped to the Storage Tank to be cycled back into the wash process.
- Repeat Step 1*

## The Difference:

- ◆ Reuse water for High Pressure Blasters, Presoak, Prep Soap, Tire & Wheel, Tricolor Conditioners and Clearcoat Protectants.
- ◆ Equipment is leased which lowers the capital cost by up to 90%.
- ◆ A simple valve and pump system results in a more reliable operation for higher run times- no filters or ozone generators required!



*Before and After Treatment*

## Cost to Operate the SuperClear™ System

\$.004/gal\*

(using Combine and Drop Out)

\*Costs based on 80% water recovery and 50, 33 and 50 ml/180 gallons respectively.

\$.006/gal\*

(with the addition of Odor Gone)



## Models

- ◆ SuperClear 200 System (pictured on cover)
- ◆ SuperClear 500 System

## Applications

- ◆ Auto Wash
- ◆ Industrial Wash including truck, bus and rail cleaning

For lease information, please contact your Blendco or DuBois representative or the Blendco office at 800-446-2091.

# BLENDCO

SYSTEMS

A Division of DuBois Chemicals  
One Pearl Buck Court  
Bristol, PA 19007  
800.446.2091  
[www.blendco.com](http://www.blendco.com)

