



## **Oils and Greases**

# DuBois Lubricants



## Greases

### TPG

Total performance lithium complex grease for temperature extremes in central lubrication systems.  
Use 30-350°F, 400°F max.

### MPG-0, 2

Multipurpose, chemical and water resistant, polymer fortified calcium complex greases.  
Use MPG-0 in central lubrication systems.  
Use 30-450°F, 500°F max.  
Use MPG-2 up to 600°F.

### ACG-1, 2

Chemical and water resistant aluminum complex greases.  
Use ACG-1 in central lubrication systems.  
Use 45-350°F, 450°F max.

### ACF-2

Food grade, chemical and water resistant aluminum complex grease.  
Use 30-350°F, 450°F Max.

### FGG-2

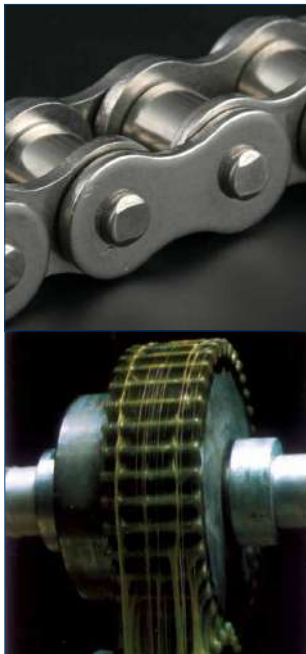
Multipurpose food grade calcium/clay complex grease.  
Use 100-200°F, 250°F max.

### CLG-0, 2

Lithium complex greases for central lubrication systems.  
CLG-0 pumps easier than CLG-2.  
Use 30-300°F, 350°F max.

### Semi-Fluid Grease

Pourable, multipurpose aluminum complex grease for use in leaky gear boxes.  
Use 0-350°F, 450°F max.



## Oils

### MPO 10, 20, 30

Premium multipurpose polymer fortified oils. MPO's are widely used on drag chains and bearings and are excellent heavy-duty hydraulic oils.

### Double-Lube AW 68, 46, 100, 320

General purpose hydraulic oils which contain R&O inhibitors and foaming agents.

### Double-Lube AW 32NZ, 46NZ, 68NZ

Zinc-free hydraulic oils for leaking systems.

### Double-Lube R&O 32, 46, 68, 150, 220, 320

General purpose oils with an extra strength rust and oxidation inhibition package.

### EGO 68, 100, 220, 320, 460

Polymer fortified, nondetergent heavy-duty gear oils which contain additives to help prevent sludge and deposit formation.

### Double-Lube EP 220

Nondetergent, polymer enclosed, general purpose gear oil which contains additives to help prevent sludge and deposit formation.

### Double-Lube GPO 68, 220

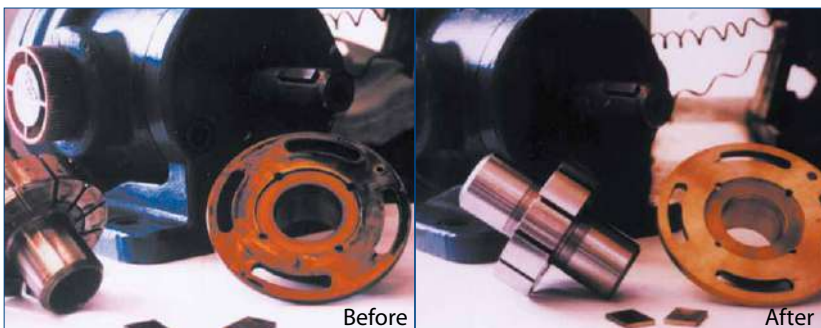
Outstanding way lubricants with excellent rust and oxidation inhibition.

### Double-Lube SPO 02, 10, 22

Rust and oxidation inhibited spindle oils that help prevent sludge and deposits.

### Double-Lube 15w40/10w30

Automotive oils for trucks and fleets. These oils contain maximum corrosion and wear resistance additives which maintain oil integrity and extend life.



## Step One (Oil Soluble Cleaner)

Step One is a clear, amber-colored liquid formulated to remove varnish, carbon, sludge and small amounts of water from oil systems. Step One contains a blend of powerful carbon and varnish removers, dispersants, emulsifiers and rustinhibitors. It does not contain solvents. Step One cleans all petroleum and synthetic PAO oil reservoir systems.

**DuBois Chemicals**  
3630 East Kemper Road  
Sharonville, OH 45241-2011  
800 438 2647

In Canada  
1155 North Service Road West, Unit 11  
Oakville, ON L6M 3E3  
866 861 3603

[www.duboischemicals.com](http://www.duboischemicals.com)

Reorder # 1383089 (12913) Lubricants Line Card